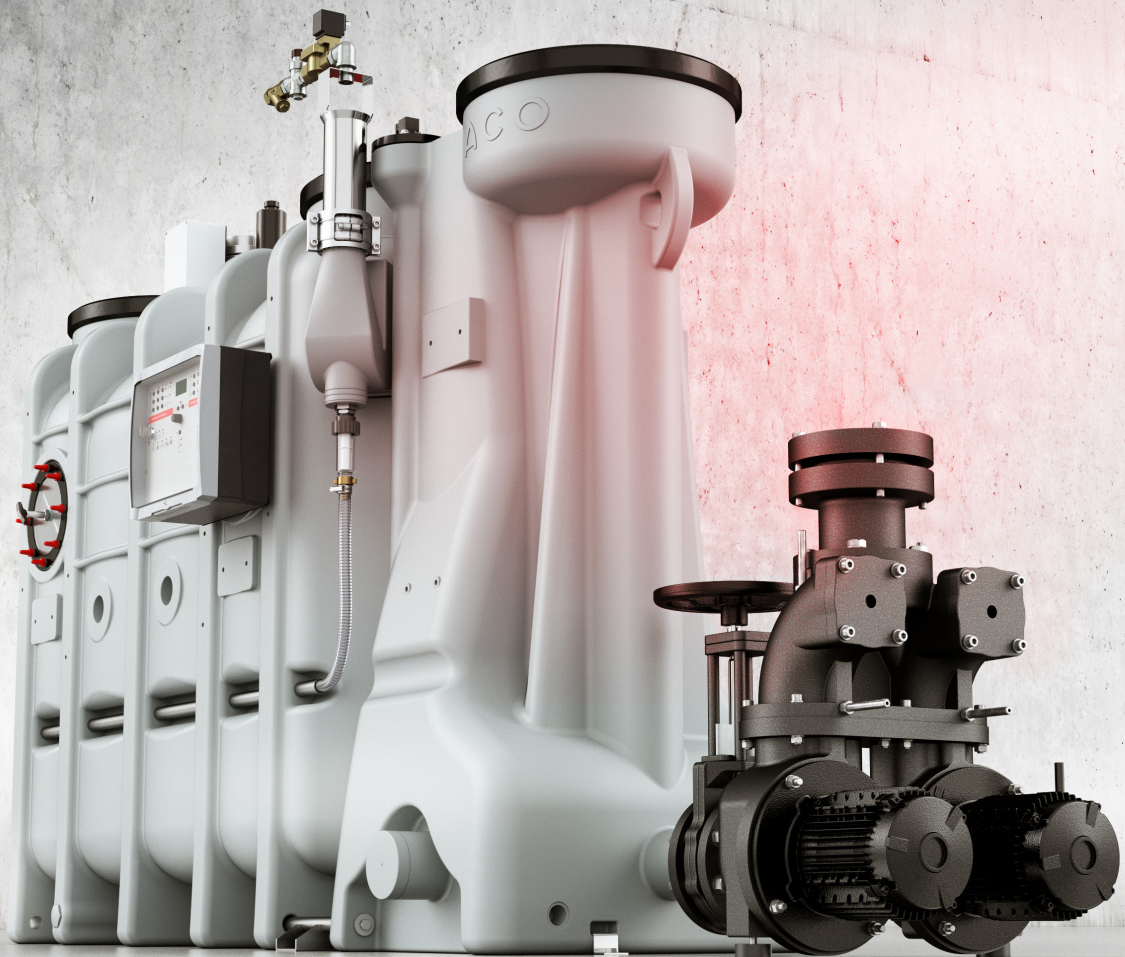




Grease separator

ACO Information

with integrated lifting station



The problem

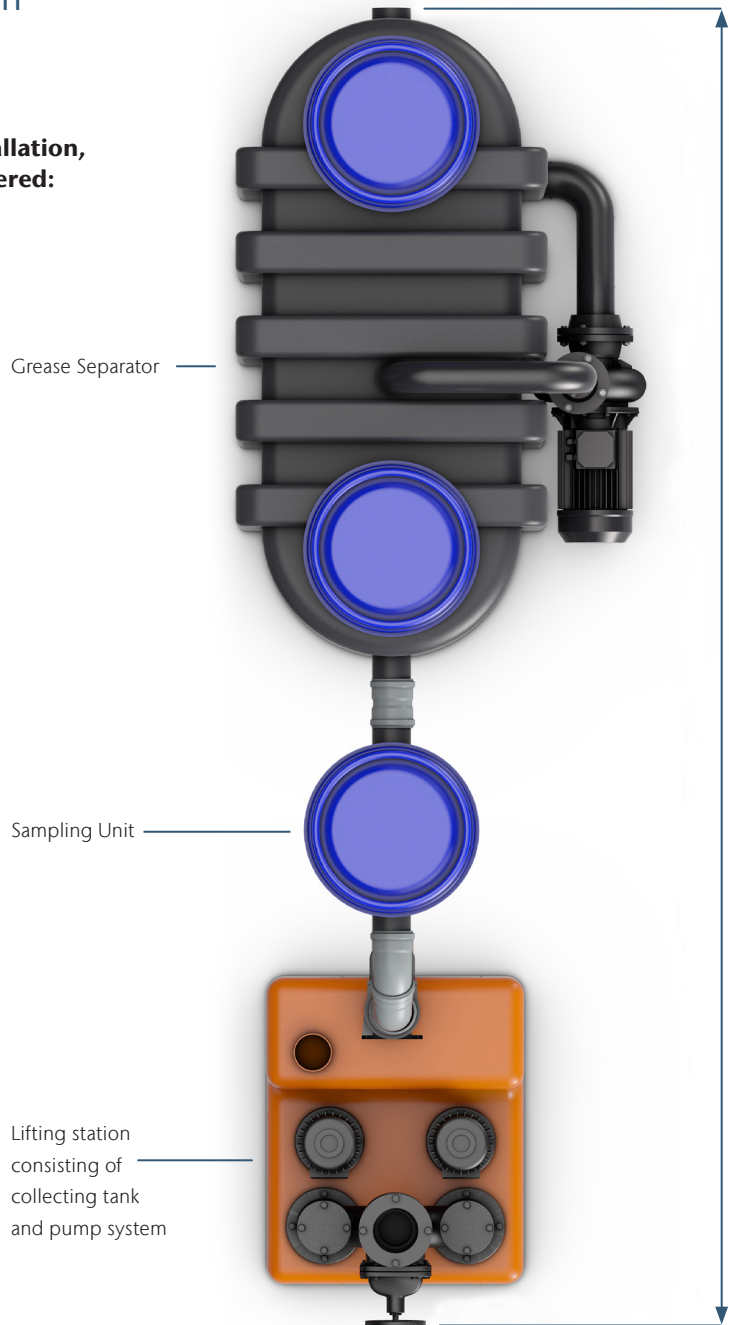
Single components increase the length of the total installation

When planning a grease separator installation, the following aspects have to be considered:

- What will be the total length of the installation required, allowing for a suitable calming distance into the grease separator?
- Do local codes require the additional installation of a sampling unit downstream of the grease separator?
- Is it essential to equip the separator with a lifting station because the installation lies below the backflow level?

Through the application of single components, the total installation length will increase significantly.

This space required may not leave sufficient free space to establish a calming pipe into the separator improving the efficiency as suggested in EN 1825.



The solution

ACO LipuSmart: the integration of all components in one product

ACO LipuSmart is a combination of several functions. Combining:

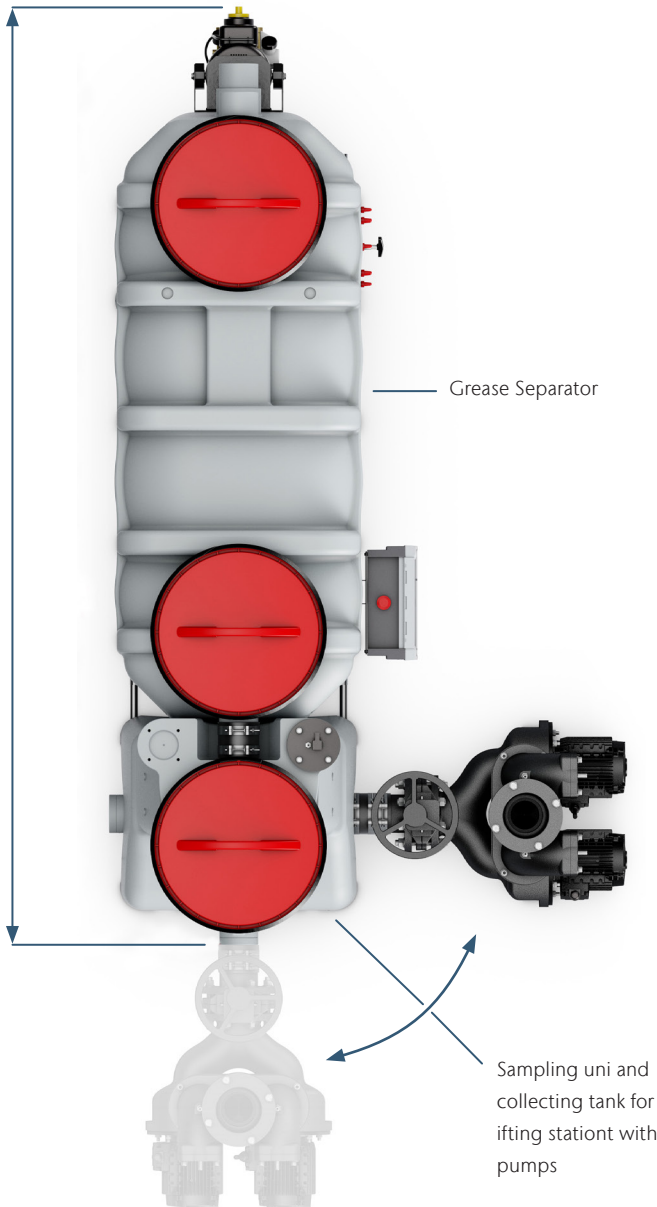
- a grease separator
- a sampling unit
- a lifting station including air bubble injection for highest operational reliability after the grease separator

Due to the integration of single components into one compact functional unit, a significant length reduction has been achieved.

The compactness of the unit allows more space in the installation area to allow the calming distance as suggested in EN 1825.

The calming distance maybe even be increased because of the space-saving and dependant on the local conditions. Thus allowing increased efficiency of the grease separator.

Moreover, in extremely cramped rooms the length of the total installation is reduced once again: On site, the pump system can be installed inline, to the left or to the right of the collecting tank/sampling unit.

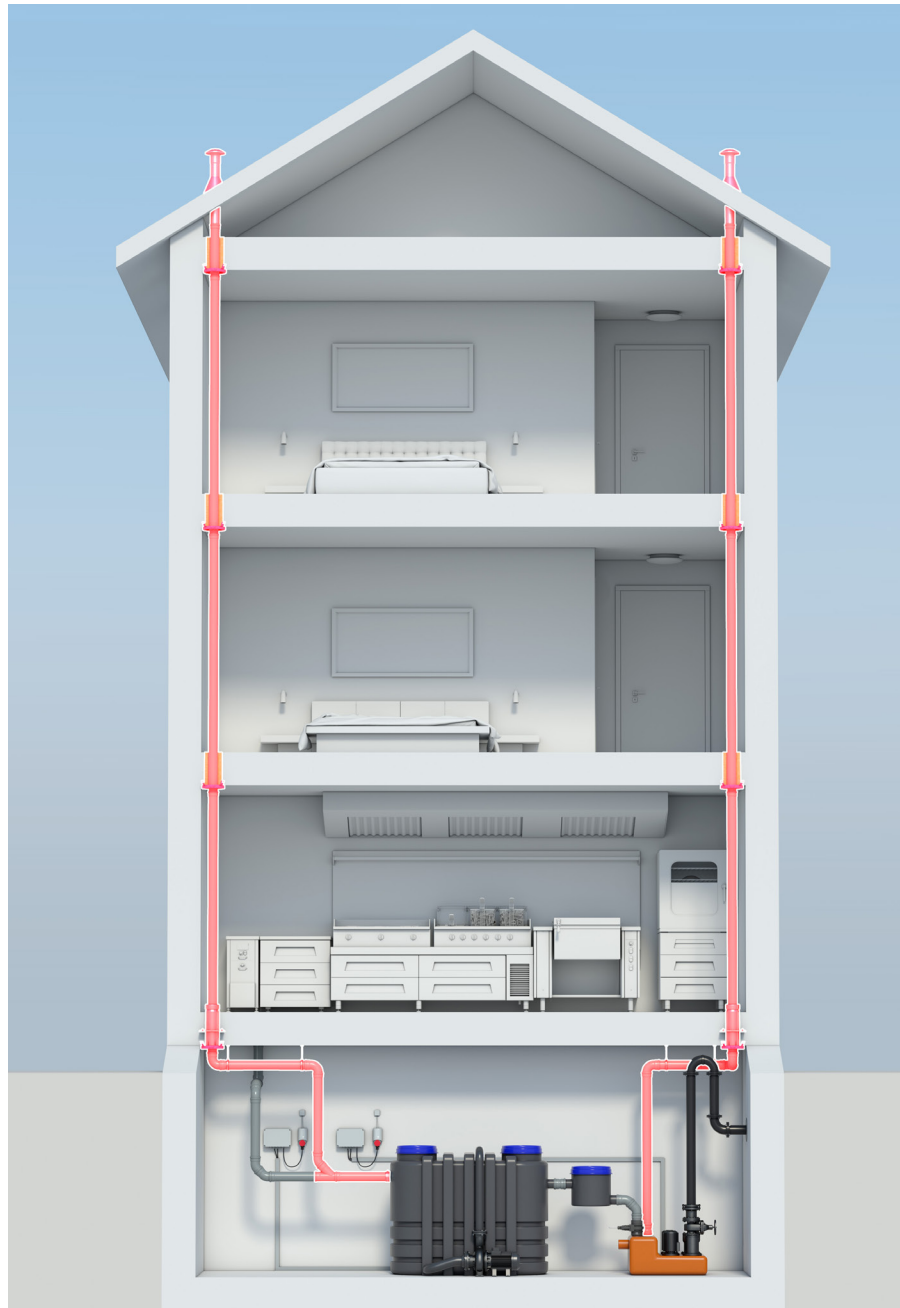


The problem

Grease separator and lifting station require separate ventilation lines

Individually installed grease separators and belonging lifting stations (possibly both separated through a sampling unit) need stand-alone ventilation lines.

These ventilation lines have to be taken above roof level. Since the required ducts have normally to pass through several floors, this requires additional material, time and manpower.

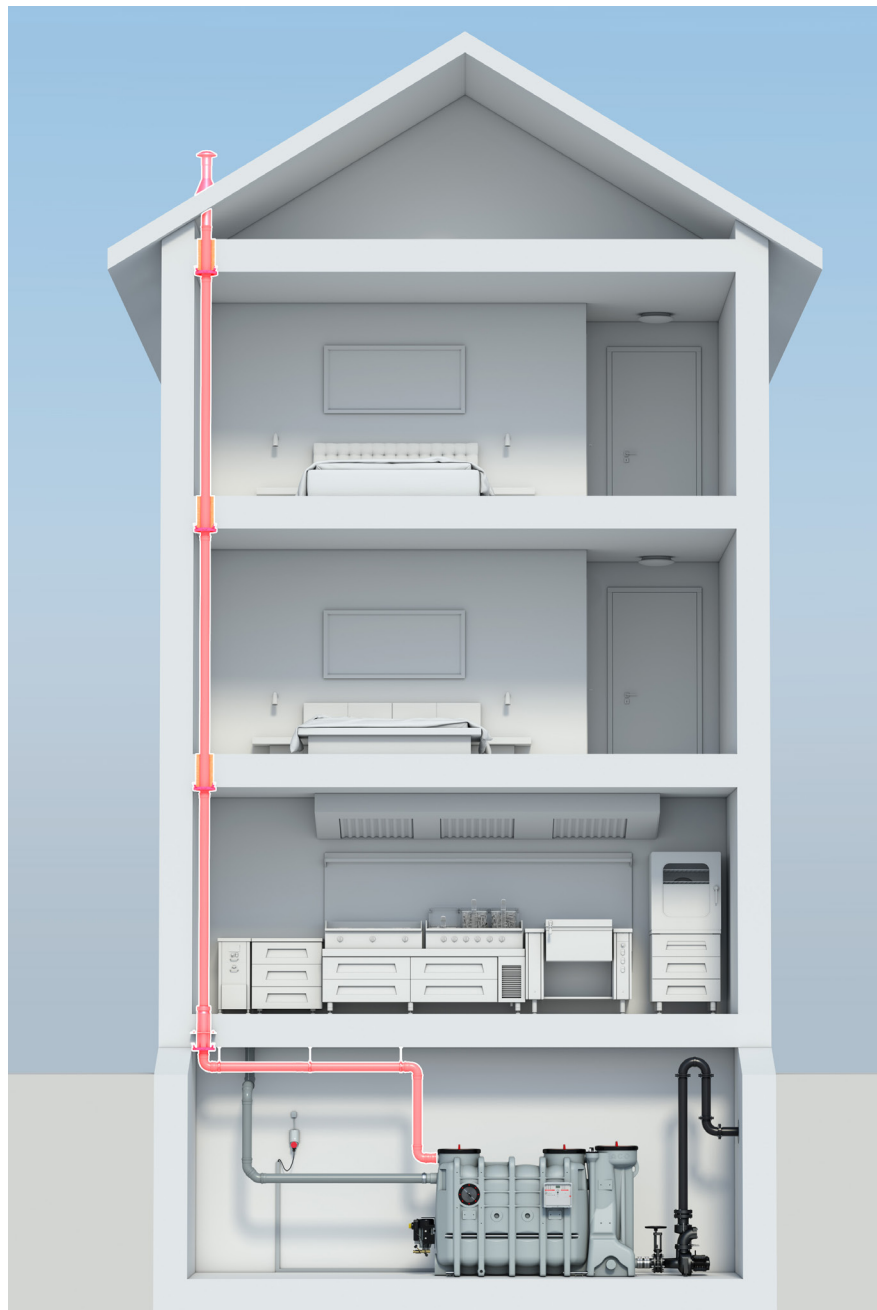


The solution

ACO LipuSmart: one combined ventilation line for both separator and lifting station

The mandatory standard ventilation line above the operating water level of the integrated grease separator enables constant ventilation of both the separator and the lift plant through the ventilation bridge.

Therefore, all guidelines for correct ventilation for both separator and lift plant are being respected with a minimum of installation effort.



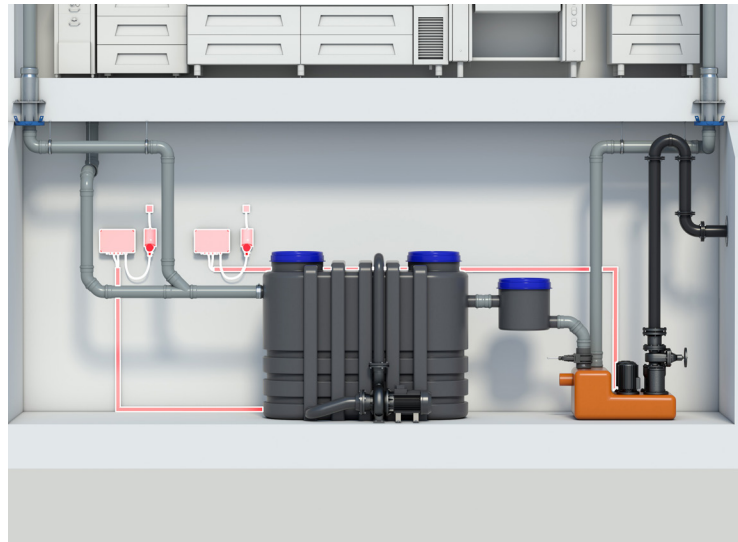
The problem

Separate control units for both grease separator and lifting station

For grease separators with automated cleaning/ disposal appropriate control units for both the grease separator and the lift plant have to be specified. Moreover, some manufacturers require the installation of the control unit at the wall of the installation room.

All these works are directly linked to increased installation work (two plug sockets, cable ducting, wall fastenings, etc.)

Both control units have to be checked for proper operation for both the separator and lifting station.



Piping between separator, sampling unit and lift plant

6

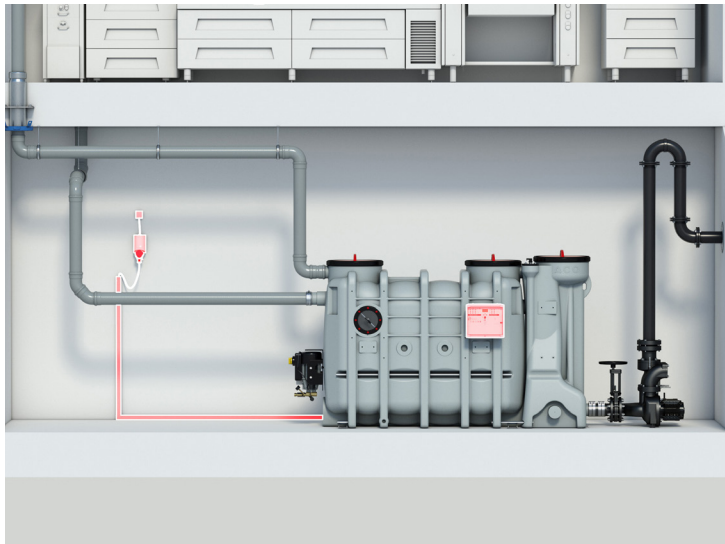
Since the necessary components are provided separately with usual solutions, appropriate connections have to be established on-site through pipes, bends and sockets.

Wear and tear, damaging and incorrect installation may lead to leakage problems and odour trouble.



The solution

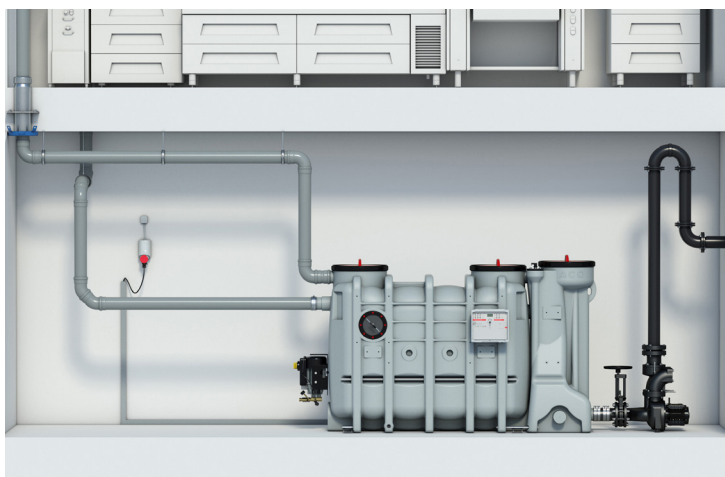
ACO LipuSmart: one control unit for both applications directly at the product



ACO LipuSmart, the solution integrating both grease separator and lifting station includes only one control unit which is mounted integral with the separator ex works. The control unit enables fast and simple function of both applications by operators or installers. Furthermore, elaborate laying of cables for wall fastening of the control unit does not apply.

The overall system control unit only needs to be connected with the local power supply.

ACO LipuSmart: pipeless transition between all components



With ACO LipuSmart it is not needed to create pipe connections between separator, sampling unit and lift plant anymore because ex works all components have been connected and checked for tightness.

Thus, the total plant is ready for connection with the inflow pipe and the pressure line. The installation of additional pipes, bends and sockets does not apply.

ACO. creating
the future of drainage



Ceb 172 08/2019

ACO Haustechnik GmbH

Im Gewerbepark 11c
36457 Stadtlengsfeld
Tel. +49 36965 819-0
Fax +49 36965 819-361

haustechnik@aco.com
www.aco-haustechnik.de

