

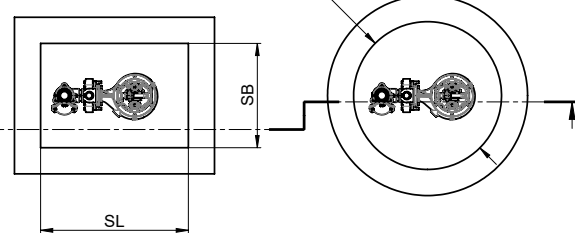
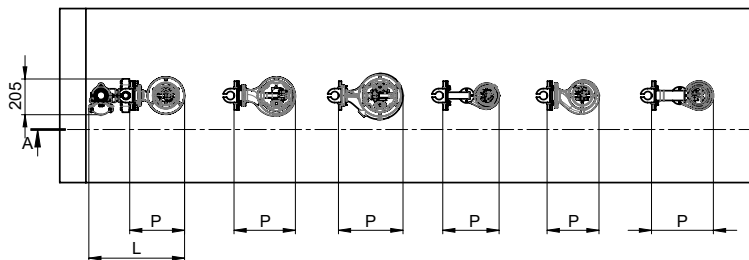
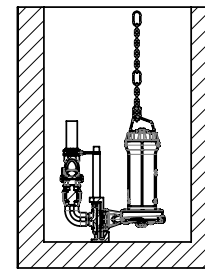
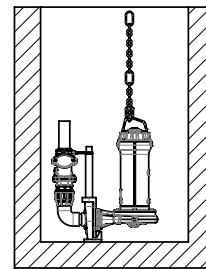
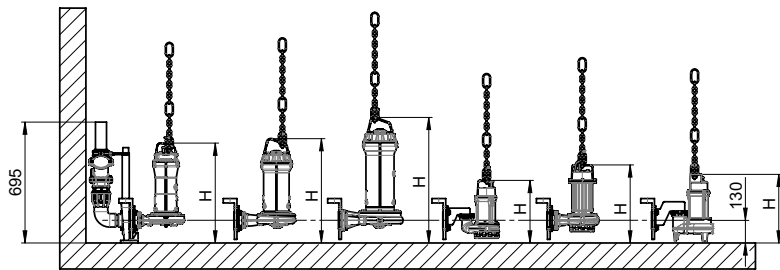
ACO Powerlift Pumpenset DN 50 mono



ACO Sita200 N-EX-G 0178.64.30
 ACO Sita300 N-EX-G 0178.64.32
 ACO Sita550 N-EX-G 0178.64.33
 ACO Sat50/2/32 0178.12.76
 ACO Sat75/2/32 0178.12.77
 ACO Sat100/D 0178.12.80
 ACO Sat150/D 0178.12.81
 ACO SatV75 0178.12.83
 ACO SatV150 0178.12.84
 ACO Sat200/D 0178.12.82

Empfohlener minimaler Einbauraum ACO Powerlift Pumpenset DN50 mono (rechteckig)

Empfohlener minimaler Einbauraum ACO Powerlift Pumpenset DN50 mono (rund)



	Pumpenabmaße			Empfohlener minimaler Einbauraum		
	Pumpenlänge (mm)	Gesamtlänge (mm)	Höhe (mm)	rechteckig		rund
				Schachtlänge (mm)	Schachtbreite (mm)	Schachtdurchmesser (mm)
P	L	H	SL	SB	D	
ACO Sita 200 N-EX-G	315	550	574	700	400	800
ACO Sita 300 N-EX-G	353	588	600	725	400	800
ACO Sita 550 N-EX-G	371	606	721	750	450	800
ACO SAT 50/2/32	324	559	359	700	400	800
ACO SAT 75/2/32	324	559	359	700	400	800
ACO Sat 100/D	298	533	449	675	400	800
ACO Sat 150/D	298	533	449	675	400	800
ACO Sat 200/D	298	533	449	675	400	800
ACO SAT V75	356	591	394	750	400	850
ACO SAT V75	356	591	434	750	400	850

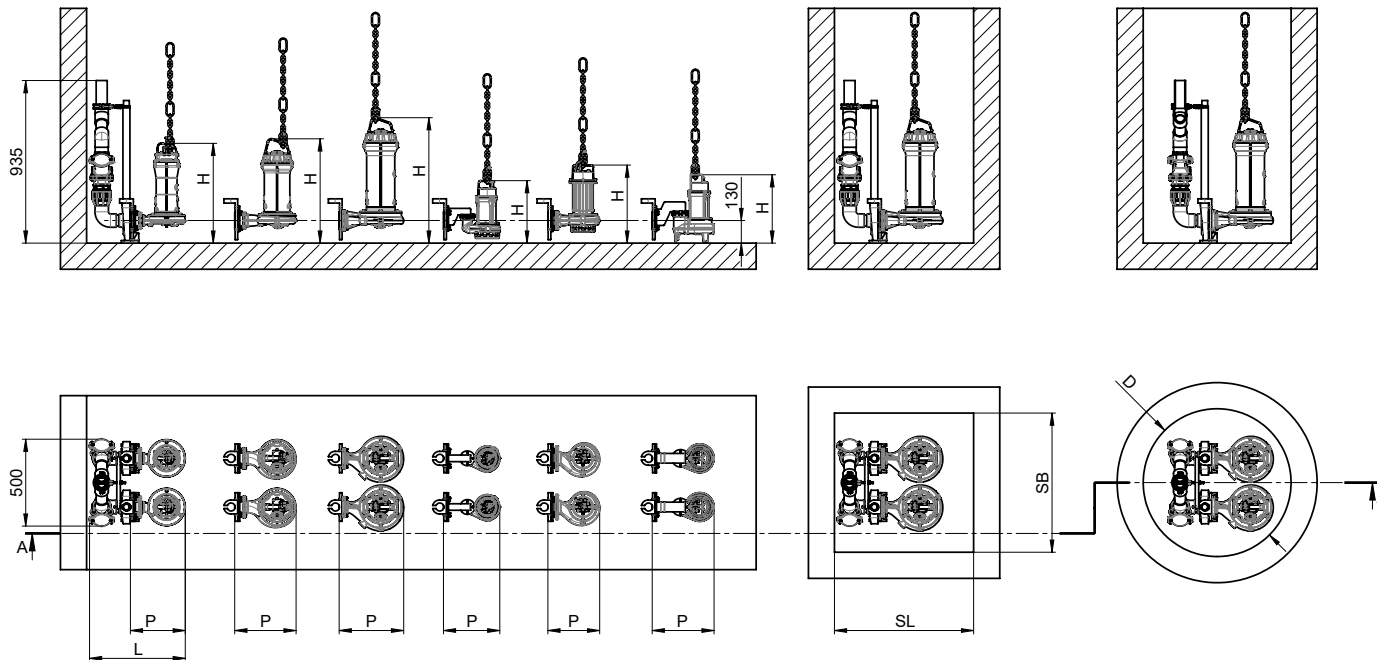
ACO Powerlift Pumpenset DN 50 duo



ACO Sita200 N-EX-G 0178.64.30
 ACO Sita300 N-EX-G 0178.64.32
 ACO Sita550 N-EX-G 0178.64.33
 ACO Sat50/2/32 0178.12.76
 ACO Sat75/2/32 0178.12.77
 ACO Sat100/D 0178.12.80
 ACO Sat150/D 0178.12.81
 ACO Sat200/D 0178.12.82
 ACO SatV75 0178.12.83
 ACO SatV150 0178.12.84

Empfohlener minimaler Einbauraum
 ACO Powerlift Pumpenset DN50 duo (rechteckig)

Empfohlener minimaler Einbauraum
 ACO Powerlift Pumpenset DN50 duo (rund)



	Pumpenabmaße			Empfohlener minimaler Einbauraum		
	Pumpenlänge (mm)	Gesamtlänge (mm)	Höhe (mm)	rechteckig		rund
				Schachtlänge (mm)	Schachtbreite (mm)	Schachtdurchmesser (mm)
P	L	H	SL	SB	D	
ACO Sita 200 N-EX-G	315	550	574	700	700	1000
ACO Sita 300 N-EX-G	353	588	600	725	700	1000
ACO Sita 550 N-EX-G	371	606	721	750	750	1000
ACO SAT 50/2/32	324	559	359	700	700	1000
ACO SAT 75/2/32	324	559	359	700	700	1000
ACO Sat 100/D	298	533	449	675	700	1000
ACO Sat 150/D	298	533	449	675	700	1000
ACO Sat 200/D	298	533	449	675	700	1000
ACO SAT V75	356	591	394	750	700	1000
ACO SAT V150	356	591	434	750	700	1000

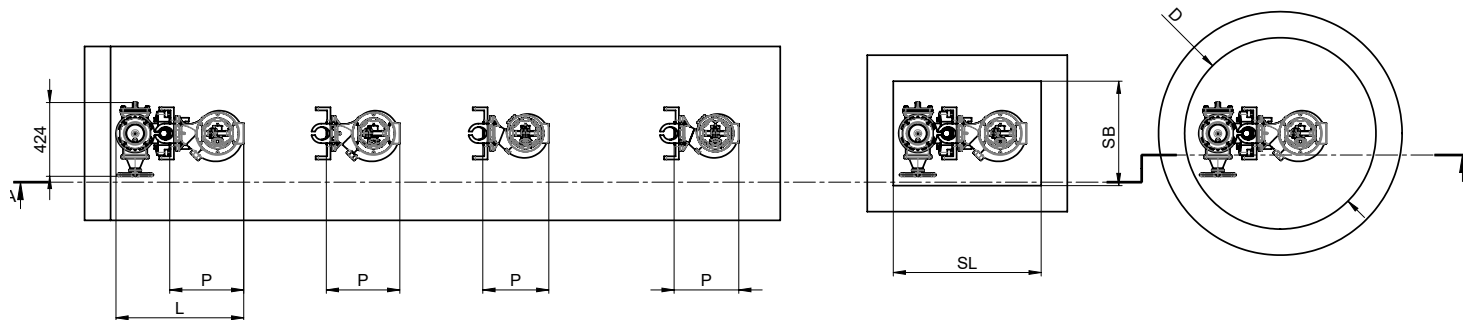
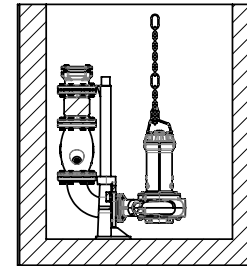
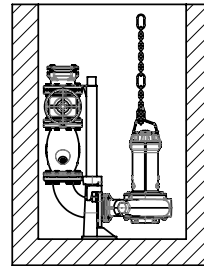
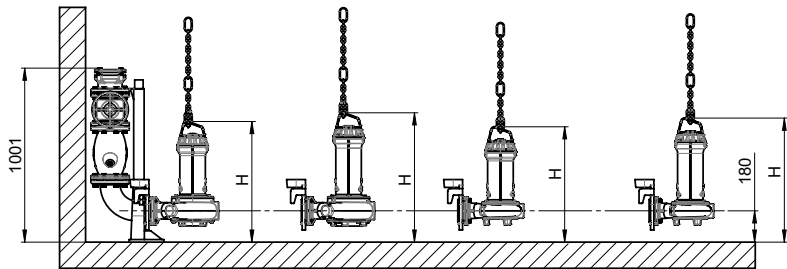
ACO Powerlift Pumpenset DN 100 mono



ACO KL-AT-M 200-G 0178.64.34
 ACO KL-AT-M 300-G 0178.64.35
 ACO SatQ 300-G 0178.64.40
 ACO SatQ 400-G 0178.64.41
 ACO KL-AT-M 400-G 0178.64.36

Empfohlener minimaler Einbauraum ACO Powerlift Pumpenset DN100 mono (rechteckig)

Empfohlener minimaler Einbauraum ACO Powerlift Pumpenset DN100 mono (rund)



	Pumpenabmaße			Empfohlener minimaler Einbauraum		
	Pumpenlänge (mm)	Gesamtlänge (mm)	Höhe (mm)	rechteckig		rund
				Schachtlänge (mm)	Schachtbreite (mm)	Schachtdurchmesser (mm)
P	L	H	SL	SB	D	
ACO KL-AT-M 200-G	426	735	694	850	650	1100
ACO KL-AT-M 300-G	423	732	744	850	650	1100
ACO KL-AT-M 400-G	423	732	744	850	650	1100
ACO SAT-Q 300-G	379	688	663	800	650	1050
ACO SAT-Q 400-G	372	681	713	800	650	1050

ACO Powerlift Pumpenset DN 100 duo



ACO KL-AT-M 200-G
0178.64.34

ACO KL-AT-M 300-G
0178.64.35

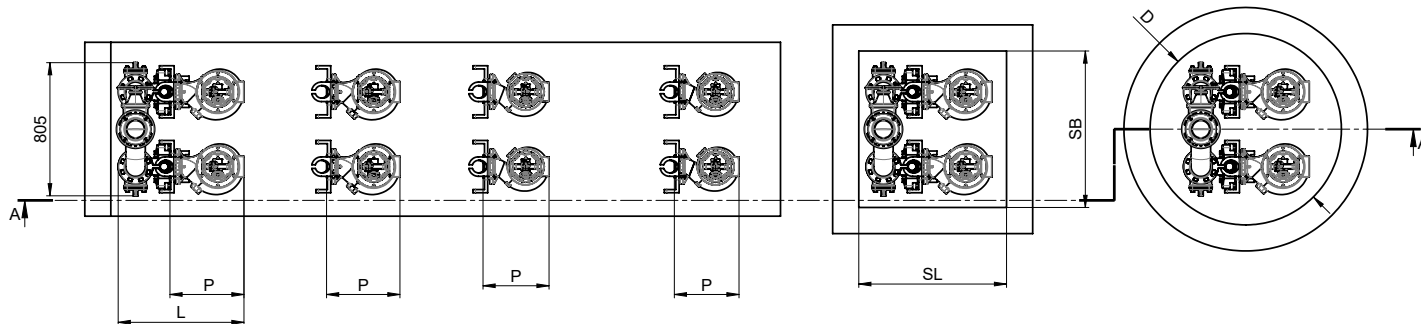
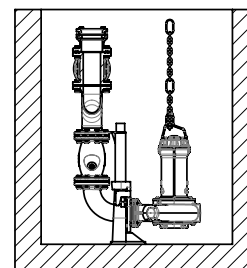
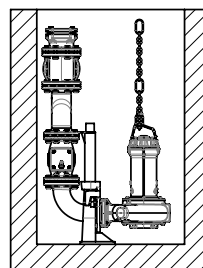
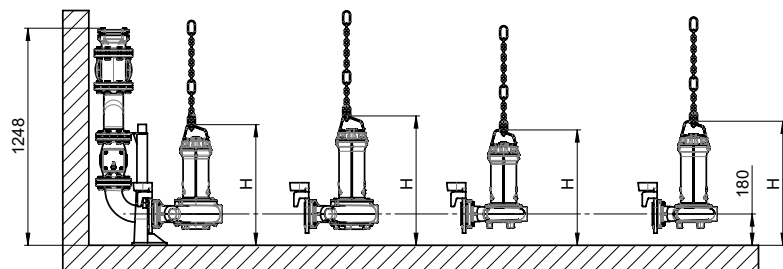
ACO SatQ 300-G
0178.64.40

ACO SatQ 400-G
0178.64.41

ACO KL-AT-M 400-G
0178.64.36

Empfohlener minimaler
Einbauraum
ACO Powerlift Pumpenset
DN100 duo (rechteckig)

Empfohlener minimaler
Einbauraum
ACO Powerlift Pumpenset
DN100 duo (rund)



	Pumpenabmaße			Empfohlener minimaler Einbauraum		
	Pumpenlänge (mm)	Gesamtlänge (mm)	Höhe (mm)	rechteckig		rund
				Schachtlänge (mm)	Schachtbreite (mm)	Schachtdurchmesser (mm)
P	L	H	SL	SB	D	
ACO KL-AT-M 200-G	426	724	694	850	1000	1200
ACO KL-AT-M 300-G	423	721	744	850	1000	1200
ACO KL-AT-M 400-G	423	721	744	850	1000	1200
ACO SAT-Q 300-G	379	677	663	800	1000	1100
ACO SAT-Q 400-G	372	670	713	800	1000	1100